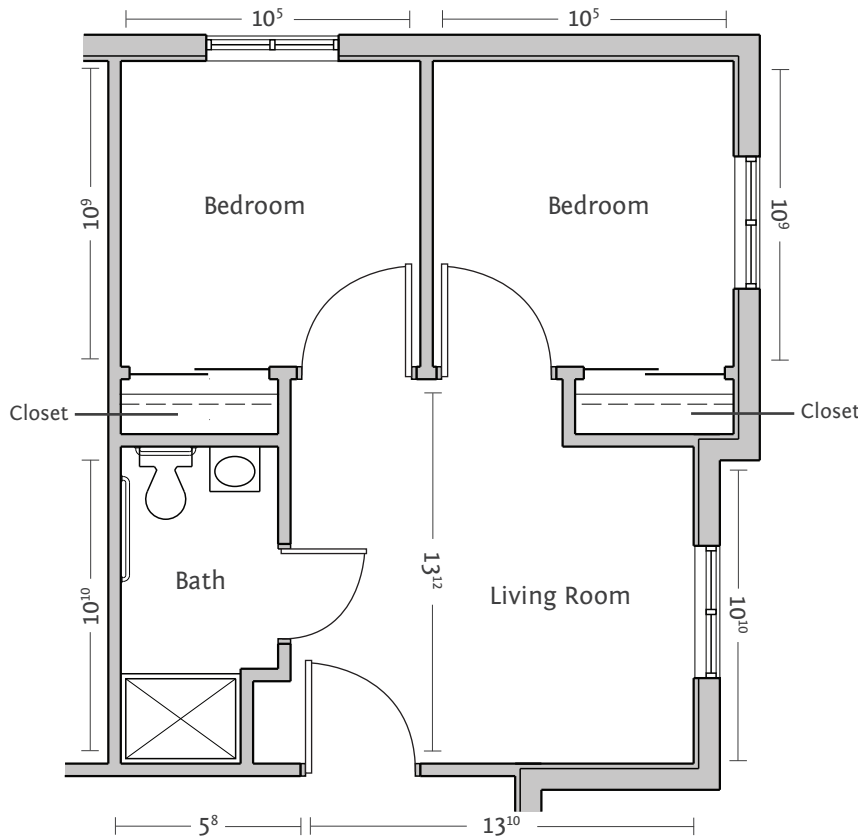


The Wisteria (Semi Private) | Memory Care Suite

460 S/F | Two Bedroom | One Bath

All-Inclusive Pricing & Amenities

You will pay one rate for all your care while in Assisted Living and Memory Care. This easy All-Inclusive Pricing will allow you to budget more effectively and never worry about hidden fees or add-ons every month.




OSPREY VILLAGE
AT AMELIA ISLAND PLANTATION

1 of 2
Memory Care Floorplans

48 Osprey Village Drive
Amelia Island, FL 32034
Phone: 904-277-8222
Osprey-Village.com

Features and Amenities

- Apartments - studio to one-bedrooms w/ private bathrooms
- Wellness Center w/ indoor, heated therapy pool
- Salon & Spa
- The Osprey Village Dining Experience
- Full Service Bar
- Anytime snacks
- Courtyards, libraries and gathering rooms
- Maintenance-free living
- All utilities including cable and Wi-Fi

The Osprey Village Advantage

- All-Inclusive Pricing in Assisted Living and
- Alzheimer's & Dementia Care
- 24/7 on-site registered nurse
- Pet friendly community
- Daily social calendar to stimulate the brain and body
- 24-hour emergency response system
- Evening campus security
- Concierge Service
- Weekly laundry & housekeeping
- Maintenance-free living
- All utilities including cable and Wi-Fi